

# Auger Systems and Earth Drills

**X2100 - 17 EARTH DRILL**  
**MINI-EXCAVATORS 3,300 – 6,600 LB**  
**NOT SUITABLE FOR SKIDSTEER LOADERS**

**X2700 - 25 EARTH DRILL**  
**MINI-EXCAVATORS 5,500 – 9,900 LB**  
**SKIDSTEER LOADERS UP TO 65 HP, LOW FLOW**



**MINI EXCAVATORS**  
**3,300 - 6,600 LB**  
**S4 AUGERS**  
**4 in. - 20 in. Dia**

Torque Range: 612 – 2,100 ft-lb  
 Oil Pressure Range: 1,015 – 3,481 psi  
 Oil Flow Range: 7 – 17 gpm  
 Speed Range: 36 – 87 rpm  
 Unit Height: 23 in.  
 Unit Diameter: 8 in.  
 Unit Weight: 106 lbs  
 Hitch Options: Single Pin Hitch  
 Double Pin Hitch  
 Cradle Hitch  
 Output Shaft Std: 2 in. Hex  
 Output Shaft Opt: 2.56 in. Round  
 2.25 in. Square

Single-Pin Hitch



Double-Pin Hitch



Double-Pin Cradle Hitch

**GUIDE TO DRILLING PERFORMANCE\***

AUGER DIA	DRILLING DEPTH IN FEET**		
	SOFT	MEDIUM	HARD
4 in	8 ft	8 ft	7 ft
6 in			
8 in			
9 in			
10 in	↓	↓	↓
12 in	8 ft	8 ft	7 ft
14 in	8 ft	7 ft	6 ft
15 in	7 ft	6 ft	6 ft
16 in	6 ft	6 ft	5 ft
18 in	6 ft	5 ft	5 ft
20 in	5 ft	5 ft	4 ft

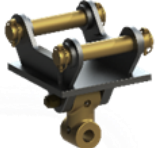


**SKIDSTEER LOADERS**  
**LOW FLOW**  
**UP TO 65 HP**  
**S4 AUGERS**  
**4 in. - 30 in. Dia**

Torque Range: 888 – 2,665 ft-lb  
 Oil Pressure Range: 1,160 – 3,481 psi  
 Oil Flow Range: 10 – 25 gpm  
 Speed Range: 50 – 126 rpm  
 Unit Height: 26 in.  
 Unit Diameter: 10 in.  
 Unit Weight: 161 lbs  
 Mounting Frame: Fixed Centre Cradle  
 Side Shift Cradle  
 Output Shaft Std: 2 in. Hex  
 Output Shaft Opt: 2.56 in. Round  
 2.25 in. Square



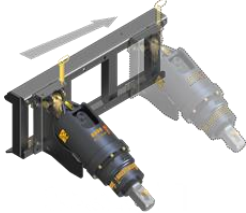
Single-Pin Hitch



Double-Pin Hitch



Double-Pin Cradle Hitch



Skid Steer Hitch

**GUIDE TO DRILLING PERFORMANCE\***

AUGER DIA	DRILLING DEPTH IN FEET**		
	SOFT	MEDIUM	HARD
4 in	10 ft	9 ft	8 ft
6 in			
8 in			
9 in			
10 in			
12 in			
14 in			
15 in			
16 in			
18 in			
20 in	↓	↓	↓
22 in	10 ft	9 ft	8 ft
24 in	10 ft	9 ft	8 ft
28 in	8 ft	7 ft	6 ft
30 in	6 ft	5 ft	5 ft



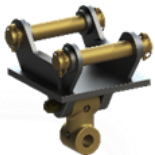
**X3300 - 30 EARTH DRILL**  
**MINI-EXCAVATORS 6,600 – 11,000 LB.**  
**SKIDSTEER LOADERS UP TO 80 HP, LOW FLOW TO STANDARD FLOW**



**MINI EXCAVATORS**  
**6,600 - 11,000 LB**  
**S4 AUGERS**  
**4 in. - 36 in. Dia**

Torque Range: 1,106 - 3,318 ft-lb  
 Oil Pressure Range: 1,160 - 3,481 psi  
 Oil Flow Range: 13 - 30 gpm  
 Speed Range: 42 - 97 rpm  
 Unit Height: 26 in.  
 Unit Diameter: 10 in.  
 Unit Weight: 166 lbs  
 Hitch Options: Single Pin Hitch  
 Double Pin Hitch  
 Cradle Hitch  
 Output Shaft Std: 2 in. Hex  
 Output Shaft Opt: 2.56 in. Round  
 2.25 in. Square

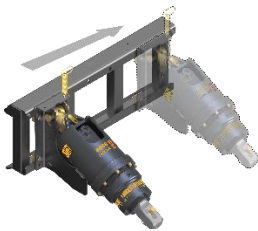
Single-Pin Hitch



Double-Pin Hitch



Double-Pin Cradle Hitch



Skid Steer Hitch

**GUIDE TO DRILLING PERFORMANCE\***

AUGER DIA	DRILLING DEPTH IN FEET**		
	SOFT	MEDIUM	HARD
4 in	13 ft	12 ft	10 ft
6 in			
8 in			
9 in			
10 in			
12 in			
14 in			
15 in			
16 in			
18 in			
20 in			
22 in			
24 in	13 ft	12 ft	10 ft
28 in	10 ft	9 ft	8 ft
30 in	8 ft	8 ft	7 ft
32 in	7 ft	6 ft	5 ft
36 in	5 ft	5 ft	4 ft



2.56 in. round



2.25 in. square



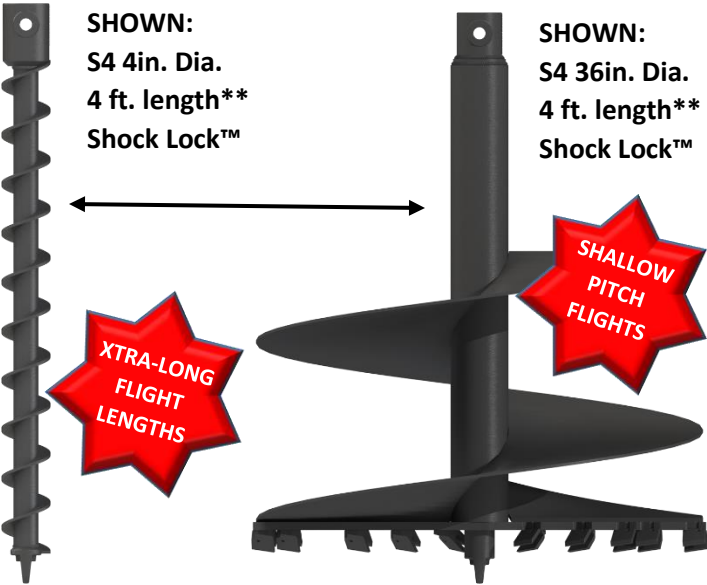
2 in. Hex

**S4 AUGERS**

Solaris Augers feature extra-long flighted sections of shallow pitch flights. Earth, Tungsten and Extra Dig variations are available.

Available in the following diameters:

- |       |       |       |       |
|-------|-------|-------|-------|
| 4in.  | 12in. | 20in. | 32in. |
| 6in.  | 14in. | 22in. | 36in. |
| 8in.  | 15in. | 24in. |       |
| 9in.  | 16in. | 28in. |       |
| 10in. | 18in. | 30in. |       |



**S4 EXTENSIONS**

S4 Auger Extensions are available in 2ft. & 4ft. lengths

← **SHOWN:**  
**S4 4ft. Extension**

**\*\*Auger lengths stated include fitted wear parts**

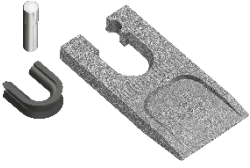
**SHOCK LOCK™**  
**Tooth Locking System**

**DON'T LEAVE YOUR TEETH DOWN THE HOLE!**

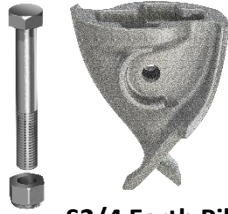


**UNIQUE**

## EARTH WEAR PARTS



**S2/4 Shock Lock™  
Earth Tooth  
33-9121-KIT**

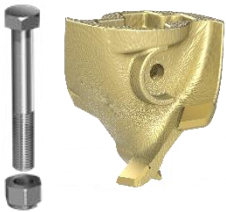


**S2/4 Earth Pilot  
33-9203-KIT**

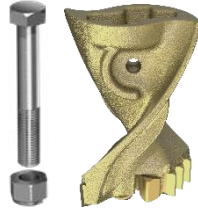
### **EARTH Shock Lock™**

Best suited to soft grounds like earth and clay

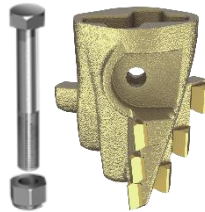
## TUNGSTEN WEAR PARTS



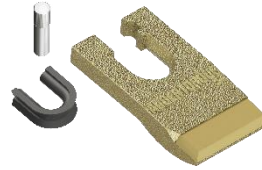
**S4  
Flat Tungsten Pilot  
33-9222-KIT**



**S4  
Tungsten Pilot  
33-9204-KIT**



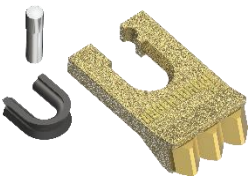
**S4  
Extra Dig Pilot  
33-9212-KIT**



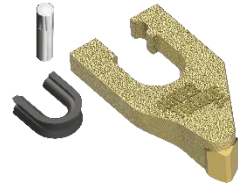
**S4 Shock Lock™  
Flat Tungsten Tooth  
33-9124-KIT**



**S4 Shock Lock™  
Flat Tungsten Chisel  
33-9123-KIT**



**S4 Shock Lock™  
Tungsten Tooth  
33-9122-KIT**



**S4 Shock Lock™  
Tungsten Chisel  
33-9122-KIT**



**S4 Shock Lock™  
Tungsten Chisel  
33-9125-KIT**



**S4 Shock Lock™  
Tungsten Chisel  
33-2023-KIT**

### FLAT TUNGSTEN Shock Lock™

Best suited to soft abrasive grounds like sand, to help reduce wear.

### FLAT TUNGSTEN CHISEL Shock Lock™

Used in conjunction with standard full width Flat Tungsten Teeth. Improves cutting where low down pressure machines are being used, i.e. Mini Loaders, small Skid Steer Loaders & small Excavators. Must only be fitted to the inside tooth holders with standard full width Flat Tungsten Teeth being fitted on the outer most holders.

### TUNGSTEN Shock Lock™

Best used in dry, hard or medium ground conditions where floating rocks may be encountered. The perfect all-rounder if you are not sure about what you might encounter.

### TUNGSTEN CHISEL Shock Lock™

Used in conjunction with standard full width Tungsten Teeth. Improves cutting where low down pressure machines are being used, i.e. Mini Loaders, small Skid Steer Loaders & small Excavators. Must only be fitted to the inside tooth holders with standard full width Tungsten Teeth being fitted on the outer most holders.

## EXTRAS



**Pin & Clip**  
**2.25" Square**  
**30-0002-KIT**



**Pin & Clip**  
**2" Hex**  
**30-0003-KIT**



**Pin & Clip**  
**2.56" Round**  
**30-0004-KIT**



**S1/2/4 Shock Lock™**  
**Tooth Holder**  
**33-1010**



**S4 Pilot**  
**Extension**  
**33-4106-KIT**



**S4 Drive Lug**  
**33-4102**



**S4 Drive Lug**  
**33-4105**



**S4 Drive Lug**  
**33-4110**

### EXTRA DIG PILOT

A stronger Pilot for more demanding ground conditions